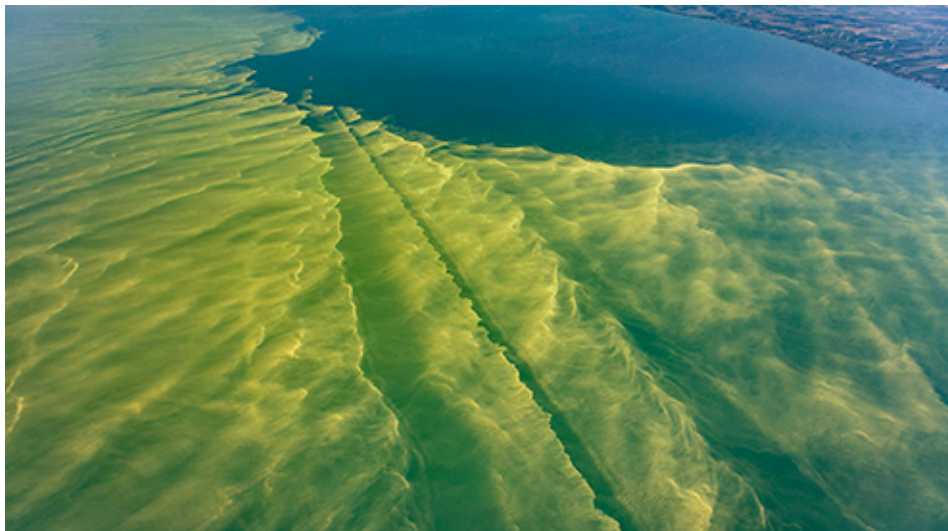


Climate Policy Recommendations



Climate change is one of the biggest threats to human communities ([/Our-Work/Climate/Climate-Change/Communities](#)) and the long-term survival of America's wildlife. Impacts include worsening megafires and hurricanes; harmful algal outbreaks; habitat loss; the spread of disease, pests, and

Donate

(<https://www.nwf.org/donatemobile>)

invasive species, and a host of other dangerous conditions for people and wildlife. **The climate science (<https://www.ipcc.ch/sr15/>) is clear—the world must slash greenhouse gas emissions in half by 2030, and reach net zero emissions by 2050.** As such, we need practical policy solutions that will mitigate the impacts of climate change by quickly cutting and capturing carbon pollution and ensuring we are able to adapt to the impacts we cannot avoid.

Below are policies that the U.S. government must take in order to confront the growing threat of climate change.

Climate Mitigation: Moving Toward a Net Zero Carbon Economy

ADVANCE MARKET-BASED SOLUTIONS TO REDUCE EMISSIONS

INVEST IN CLIMATE-SMART INFRASTRUCTURE AND CLEAN ENERGY

ENHANCE CARBON REMOVAL AND SEQUESTRATION

MEET CLIMATE GOALS WITH ADMINISTRATIVE AND CONGRESSIONAL ACTIONS



Climate Adaptation

CRAFT ADAPTATION AND RESILIENCE PLANS TO REDUCE RISKS FROM CLIMATE IMPACTS

PROMOTE THE USE OF NATURE-BASED SOLUTIONS TO PROTECT PEOPLE, PROPERTY, AND WILDLIFE

ADOPT CLIMATE-SMART APPROACHES FOR MANAGING LAND AND WATER

ENHANCE AND RESTORE HABITAT CORRIDORS AND CONNECTIVITY

DISCOURAGE DEVELOPMENT IN HAZARDOUS AREAS

REFORM FLOOD INSURANCE AND DISASTER RESPONSE PROGRAMS

ENSURE ADAPTATION BENEFITS VULNERABLE COMMUNITIES

MAINTAIN A STRONG SCIENTIFIC BASIS FOR ADAPTATION AND RESILIENCE

Donate

(<https://www.nwf.org/donatemobile>)

Climate-Smart Infrastructure: A down payment for a resilient and low-carbon economy (/Our-Work/Climate/Climate-Change/Policy/Infrastructure)

Smart investments (/-/media/Documents/PDFs/Environmental-Threats/NWF-Climate-Energy-infrastructure-priorities-fact-sheet.ashx?

la=en&hash=0A803574CD01C202E7DD3E578FF21711BDE1F224) in our nation's energy, industrial, transportation, water, and natural infrastructure systems can increase community safety and resilience, protect and recover wildlife, boost local economies and family-sustaining jobs, and reduce greenhouse gas emissions. Effectively addressing our infrastructure needs also requires maintaining the full suite of protections provided by the nation's environmental laws, including the National Environmental Policy Act, Clean Water Act, Clean Air Act, Endangered Species Act, Safe Drinking Water Act, and more. Further, lasting, broad support for infrastructure investments requires improving equitable access to benefits, and ensuring the health and safety of the most vulnerable people and the environment. Learn more >> (/Our-Work/Climate/Climate-Change/Policy/Infrastructure)

Learn More



CLIMATE

We're addressing the environmental issues that threaten healthy wildlife populations and put species at risk. »

(/Our-Work/Climate)
Donate



PEOPLE

Saving America's wildlife strengthens our democracy and prosperity for future generations. Join our conservation army. »

(/Our-Work/People)



OUR LAND

Our nation's invaluable re
focused man

(